

CIRTL

Center for the Integration of
Research, Teaching, & Learning



About

CIRTL

Local Network:
grad.uiowa.edu/cirtl

National Network:
www.cirtl.net

The Center for the Integration of Research, Teaching and Learning (CIRTL) is a network of research universities across the U.S. and Canada. The CIRTL mission is to enhance excellence in undergraduate education through the development of a national faculty committed to implementing and advancing effective teaching practices for diverse learners as part of successful and varied professional careers.

As a member of this network, The University of Iowa offers certification to graduate students and postdocs through the CIRTL program hosted by the Graduate College.

All University of Iowa graduate students and postdocs are eligible to become CIRTL members. Interested participants need only to create an account on the national CIRTL Network website, and you can access any of the local and national programming that is available.

Participating in CIRTL is a smart, organized way to develop your skills and enhance the effectiveness of your teaching in a world that changes quickly.

Teaching-as-Research (TAR):

TAR is the deliberate, systematic, and reflective use of research methods by instructors to develop and implement teaching practices that advance learning experiences and outcomes of both students and teachers.

Learning Communities (LCs):

LCs bring together groups of people for shared learning, discovery, and generation of knowledge. To achieve common learning goals, a learning community nurtures functional relationships among its members.

Learning-through-Diversity (LtD):

LtD actively incorporates the rich array of experiences, backgrounds, and skills among undergraduates and instructors to enhance the learning of all. It recognizes that excellence and diversity are necessarily intertwined.



ASSOCIATE

Level

A CIRTl Associate can describe and recognize the value of the CIRTl Core Ideas. Participation at this level involves participating in workshop, seminars, and classes to learn about existing knowledge around issues in teaching and learning within a discipline or more broadly.

The Associate Level can be completed in as little as one semester or workshops can be taken over the course of several semesters.

To achieve Associate Level, participants must:

- Participate in a minimum of 5 CIRTl activities or programs. These 5 activities may include local as well as CIRTl network activities, but at least one activity must be local. Visit grad.uiowa.edu/cirtl and click on the “Programs and Events” tab to see upcoming events.

OR

- Complete a full-length course focused on teaching. This can be through the CIRTl network (full courses or MOOCs) or an approved UI course. Current approved UI courses are:
 - EDTL/EPLS/GRAD/RCE/PSQF:7385 Teaching and Learning in Higher Education 3 s.h.
 - GRAD/PSQF:6217 Seminar in College Teaching 3 s.h.
 - SOC:7010 Teaching Sociology 3 s.h.
 - PSQF:6205 Design of Instruction 3 s.h.
 - PSQF:6211 Universal Design and Accessibility for Online Learning
 - PSQF:6215 Web-Based Learning 3 s.h.
 - PSQF:6216 Tools and Utilities for Online Teaching 3 s.h.
 - CLAS:5100:0001 Practicum: College Teaching for TAs 1 s.h.

Participants are required to submit an application summarizing the activities comprising the Associate Level requirements and reflecting on their experiences. The application can be found by visiting bit.ly/2LSNP5v.





PRACTITIONER

Level

Practitioners exercise the knowledge they gained at the Associate level. They understand how to develop and implement a Teaching-as-Research project.

The Practitioner Level certificate takes approximately 2 semesters to complete. The semesters do not have to be consecutive. It also can be completed in a spring semester and summer term.

To achieve Practitioner Level, participants must:

- Have attained an Associate Level certificate
- Participate in a TAR prep cohort and attend 5 workshops designed to prepare students to propose and implement a TAR project (1 semester)
- Propose a Teaching as Research (TAR) project (culmination project of TAR prep cohort)
- Implement a Teaching as Research (TAR) project (1 semester or summer term)
- Attend bi-weekly Implementation cohort meetings during the semester (or summer) they implement their project
- Present reflections on their TAR project experience at a UI CIRTTL capstone event

Participants who successfully complete the TAR prep cohort series and propose a project will receive \$250. Participants who successfully implement their project and participate in the Implementation cohort will receive an additional \$250.

SCHOLAR

Level

CIRTL Scholars add to community knowledge about teaching and learning by disseminating their findings at a regional, national, or international venue.

To achieve Scholar Level participants must:

- Have attained both Associate and Practitioner level certificates

AND

- Present their TAR project research and results at a regional or national conference either in their discipline or a Teaching and Learning-related conference

OR

- Publish an article in a peer-reviewed journal about their TAR project research and results (either in a discipline-specific journal or a teaching and learning journal)

OR

- Participate in the CIRTL Network Exchange Program and present a talk on their TAR project at another CIRTL institution.

Funds are available to help with conference registration and travel to present about TAR projects.

Participants who complete the Scholar level will have the opportunity to mentor graduate students who are designing and implementing TAR projects.



Iowa's CIRTL TEAM

Welcome!

CIRTL efforts are part of the Grad Success offices, located in the University of Iowa's Graduate College.

We strive to connect graduate students with the high level discipline-independent skills and knowledge required for career success. Our signature programs include national fellowship support, career planning, CIRTL and graduate health and wellness. Through partnerships with faculty, staff, and students across campus, we create innovative programs to support you during your time at Iowa and beyond.

We invite graduate students and postdocs to visit us during their time at Iowa. We look forward to working with you

-The Grad Success Team

Lisa Kelly

CIRTL Leadership & Direction
Program Coordinator

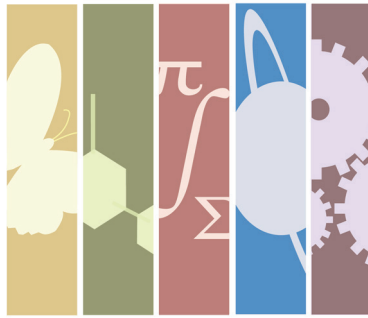
Darren S. Hoffmann, PhD

Assistant Professor of Anatomy and Cell Biology
CIRTL Faculty Lead

Jennifer Teitle, PhD

Assistant Dean for Graduate Student Development
CIRTL Administrative Lead





C I R T L

IOWA

GRADUATE COLLEGE